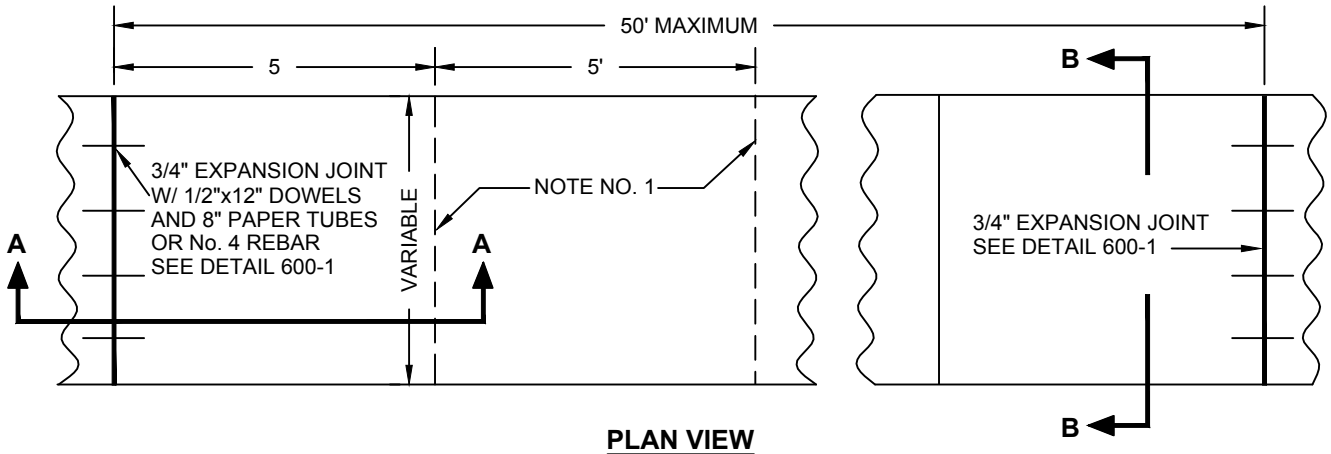
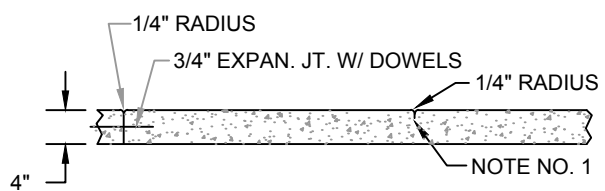


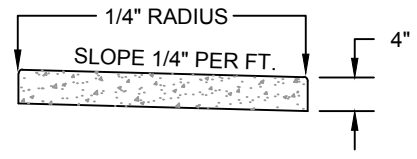
- NOTE NO. 1 CONTRACTION JOINT SCORED 1" DEEP
- NOTE NO. 2 LONGITUDINAL CONTRACTION JOINTS SHALL BE SPACED EQUIDISTANT, WITH 7' MAX. SPACING, SCORED 1/2 DEPTH OF CONCRETE.
- NOTE NO. 3 SIGN & FLAG POLE HOLDERS, WHERE DESIGNATED BY THE ENGINEER, SHALL BE PLACED 2' BEHIND THE FACE OF THE CURB. ALL GATE VALVES, CURB STOP BOXES, HYDRANTS, TRAFFIC CONTROL FOUNDATIONS AND SIGN POSTS SHALL BE WRAPPED WITH APPROVED EXPANSION JOINT.
- NOTE NO. 4 EXPANSION JOINTS AT THE BACK OF CURB AT EXISTING STRUCTURES OR BUILDINGS SHALL BE SEALED.



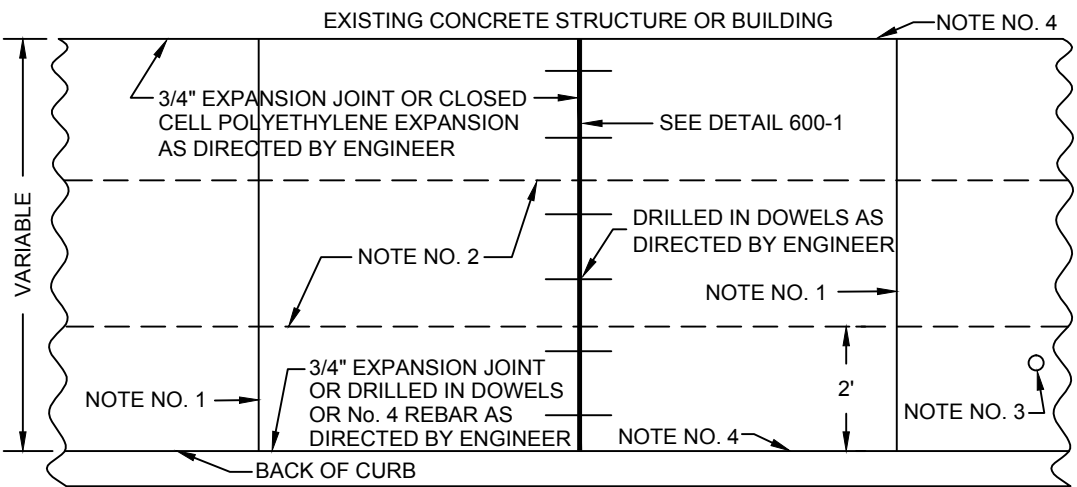
PLAN VIEW



SECTION A-A



SECTION B-B



**COMMERCIAL SIDEWALK
PLAN VIEW**

CITY OF WATFORD CITY, NORTH DAKOTA PUBLIC WORKS DEPARTMENT	
COMMERCIAL CONCRETE SIDEWALK	
APPROVED FOR PUBLICATION	DWG. NO.
City Engineer	600-2
Date	