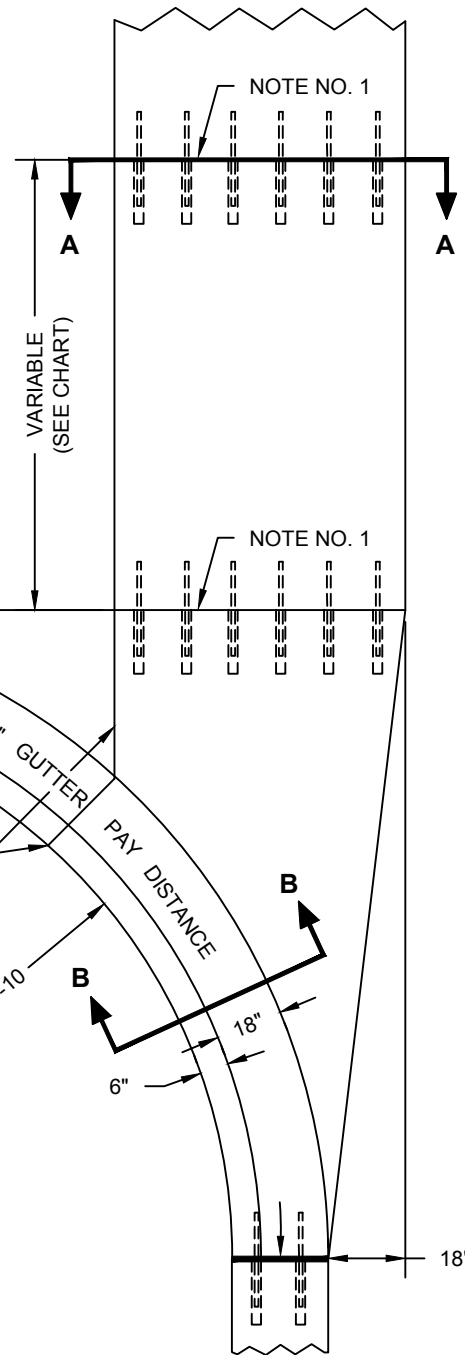
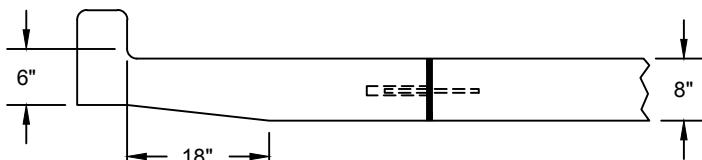


NOT TO EXCEED 1 1/2"
AND NO LESS THAN 1"

SECTION A-A



PLAN VIEW



SECTION B-B

TRANSITION TO AN 8" VALLEY GUTTER

NOTE NO. 1 3/4" EXPANSION JOINT WITH 3/4"x24" SMOOTH DOWELS & 16" PAPER TUBES. DOWELS SHALL BE GREASED THE FULL LENGTH. ALL PAPER TUBES SHALL BE PLUGGED OR CRIMPED ON ON END. ALL JOINTS SHALL BE SEALED.

NOTE NO. 2 DOWELS SHALL BE SUPPORTED BY AN APPROVED SUPPORT MADE OF NO. 7 AWG WIRE.

NOTE NO. 3 CONTRACTION JOINT SCORED 1/3 THE DEPTH OF THE CONCRETE. ALL JOINTS SHALL BE SEALED.

CITY OF WATFORD CITY, NORTH DAKOTA PUBLIC WORKS DEPARTMENT	
VALLEY GUTTER	
APPROVED FOR PUBLICATION	DWG. NO.
_____	600-16
City Engineer	Date