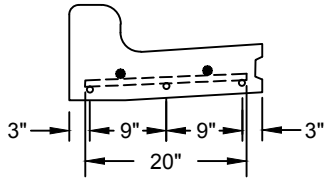
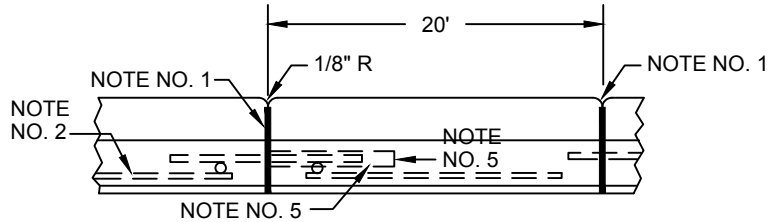


- NOTE NO. 1 3/4" EXPANSION WITH 3/4"x24" SMOOTH DOWELS & 16" PAPER TUBES. DOWELS SHALL BE GREASED THE FULL LENGTH. ALL PAPER TUBES SHALL BE PLUGGED OR CRIMPED ON OPEN END. ALL JOINTS SHALL BE SEALED.
- NOTE NO. 2 ALL BARS SHALL BE 1/2" DEFORMED REINFORCING BARS. SPLICES WILL NOT BE PERMITTED.
- NOTE NO. 3 THIS KEYED CONSTRUCTION JOINT WHEN SPECIFIED, SHALL BE PAID FOR AS "EXTRA WORK" IN ACCORDANCE WITH SECTION 126 UNLESS SPECIFICALLY CALLED FOR IN THE SPECIAL PROVISIONS OR SHOWN ON THE PLANS.
- NOTE NO. 4 CURB & GUTTER SHALL BE 6" UNLESS OTHERWISE SPECIFIED.
- NOTE NO. 5 DOWELS SHALL BE SUPPORTED BY AN APPROVED SUPPORT MADE OF NO. 7 AWG WIRE.



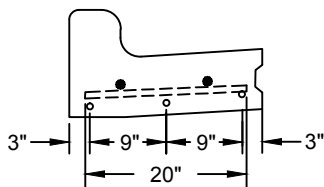
SEE DETAIL 1306 FOR CURB DIMENSIONS

SECTION A1- A1



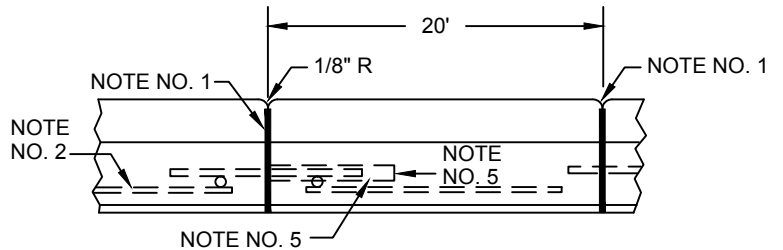
6" CURB & GUTTER

FRONT VIEW



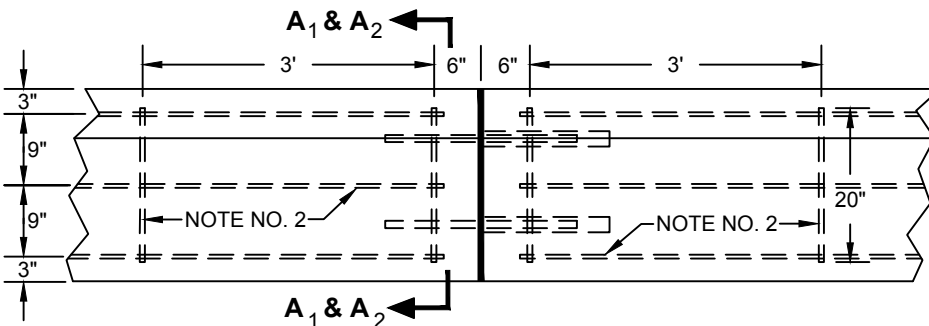
SEE DETAIL 1306 FOR CURB DIMENSIONS

SECTION A2- A2

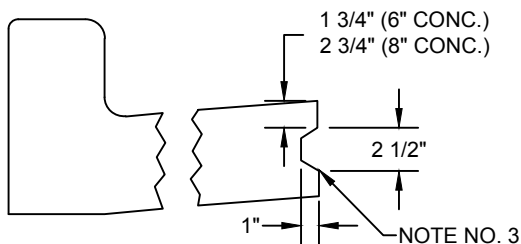


8" CURB & GUTTER

FRONT VIEW



REINFORCED CURB & GUTTER PLAN VIEW



KEYED CONSTRUCTION JOINT DETAIL

CITY OF WATFORD CITY, NORTH DAKOTA PUBLIC WORKS DEPARTMENT	
REINFORCED CURB & GUTTER	
APPROVED FOR PUBLICATION	DWG. NO.
_____ City Engineer	_____ Date
600-13	