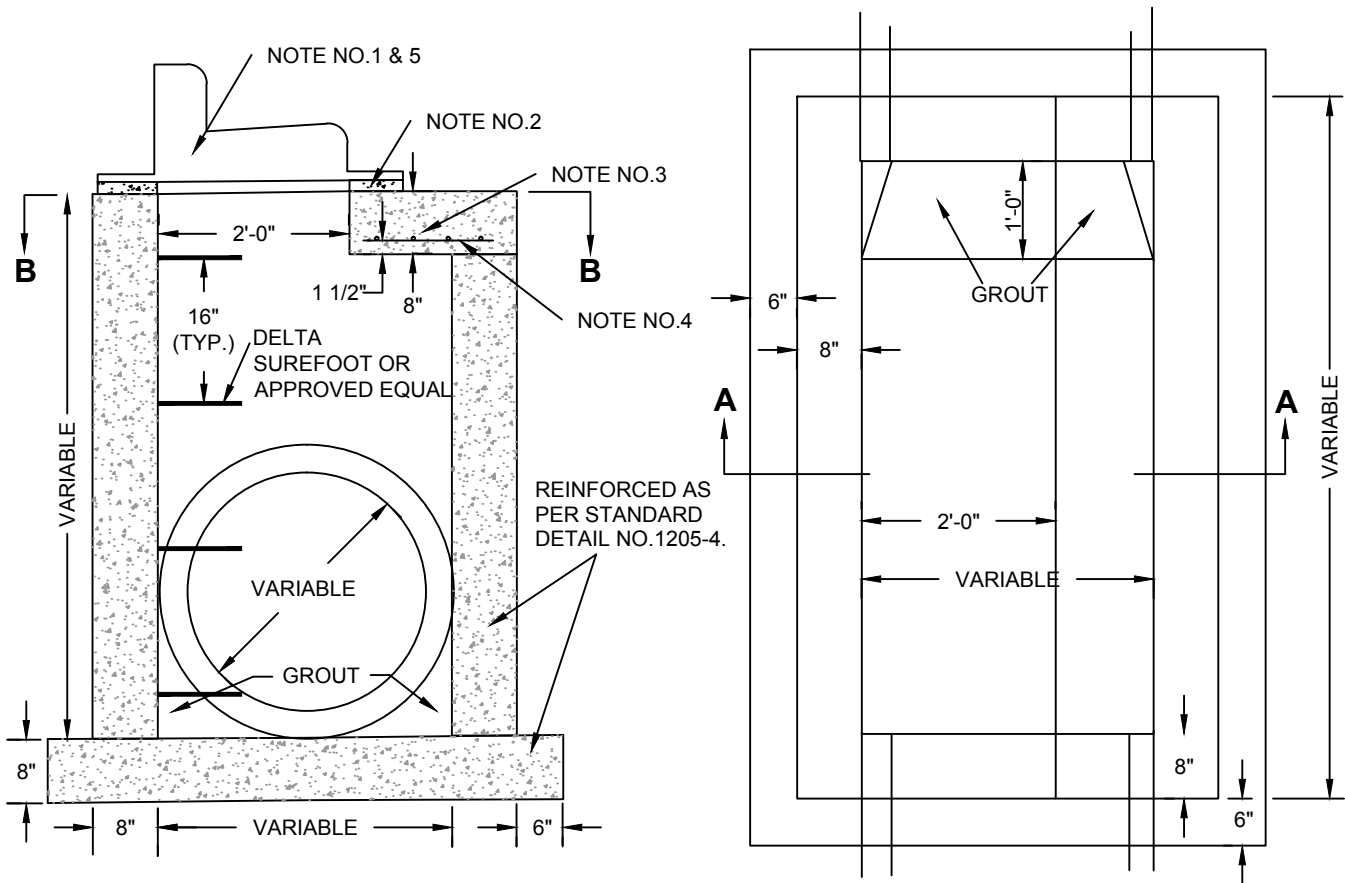


- NOTE NO.1 - TYPE 36" INLET CASTING SHALL BE AS DEFINED IN SECTION 1205-2.6.  
 TYPE 72" INLET CASTING SHALL BE AS DEFINED IN SECTION 1205-2.6.
- NOTE NO.2 - ALLOWANCE FOR ADJUSTMENT SHALL BE 1 1/2" MINIMUM TO 3" MAXIMUM. SEE STANDARD DETAIL NO.1206-1.
- NOTE NO.3 - REINFORCED CONCRETE ROOF SLAB MAY BE PRECAST OR CAST IN PLACE.
- NOTE NO.4 - ALL BARS SHALL BE NO.5 DEFORMED REINFORCING BARS SPACED 6" CENTER TO CENTER BOTH WAYS.
- NOTE NO.5 - BOLTS FOR CASTING SHALL BE TEMPER FINISH,DOUBLE HEAT TREATED-1038 S.A.E. GRADE 5, WITH CAD-DICHROMATE PLATING.
- NOTE NO.6 - STEPS SHALL BE PLACED IN SANITARY SEWER, STORM SEWER AND AIR RELEASE MANHOLES AND INLETS AS SPECIFIED. THE MANHOLE STEPS SHALL BE DELTA SUREFOOT OR APPROVED EQUAL. STEPS SHALL BE SPACED 16" ON CENTER.



|   |          |
|---|----------|
| CITY OF WATFORD CITY, NORTH DAKOTA<br>PUBLIC WORKS DEPARTMENT |          |
| TYPE 36" AND TYPE 72" INLETS<br>(SHEET 2 OF 2)                |          |
| APPROVED FOR PUBLICATION                                      | DWG. NO. |
| _____<br>City Engineer  | 1205-7   |
| _____<br>Date   |          |