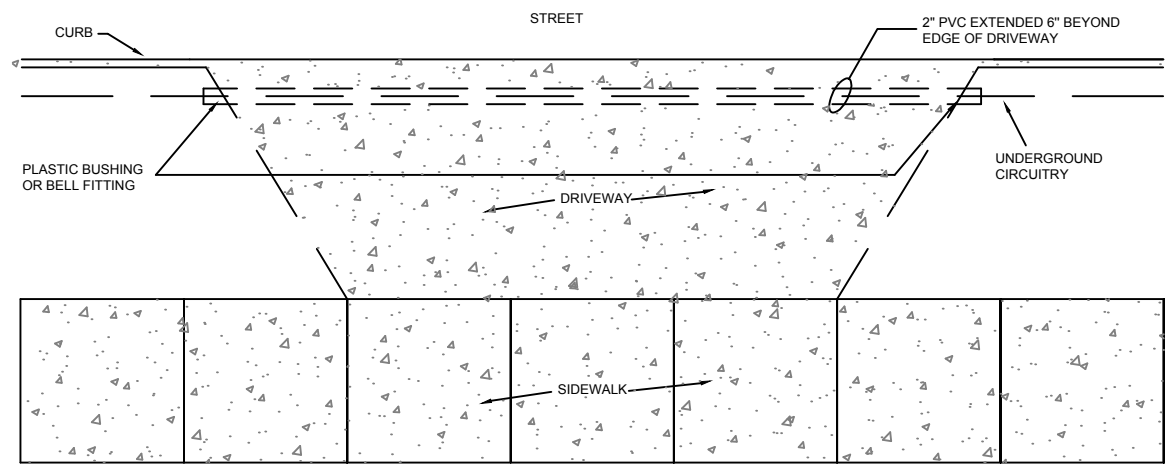


SEE NOTES 1, 2 & 3, DRIVEWAY CROSS-UNDER DETAIL

### LIGHT POLE WIRING SIDEWALK CROSS-UNDER DETAIL

NO SCALE



1. CONDUIT SHALL BE 24" BELOW GRADE AND SLOPED 3% FOR DRAINAGE.
2. CONDUIT SHALL EXTEND 6" BEYOND DRIVEWAY AT BOTH ENDS.
3. PROVIDE 9" LOOP IN CABLES AT EACH CONDUIT END.

### LIGHT POLE WIRING DRIVEWAY CROSS-UNDER DETAIL

NO SCALE

CITY OF WATFORD CITY, NORTH DAKOTA  
PUBLIC WORKS DEPARTMENT

### LIGHT POLE WIRING SIDEWALK & DRIVEWAY CROSS-UNDER

APPROVED FOR PUBLICATION  
  
City Engineer \_\_\_\_\_ Date \_\_\_\_\_

DWG. NO.  
**1000-3**